



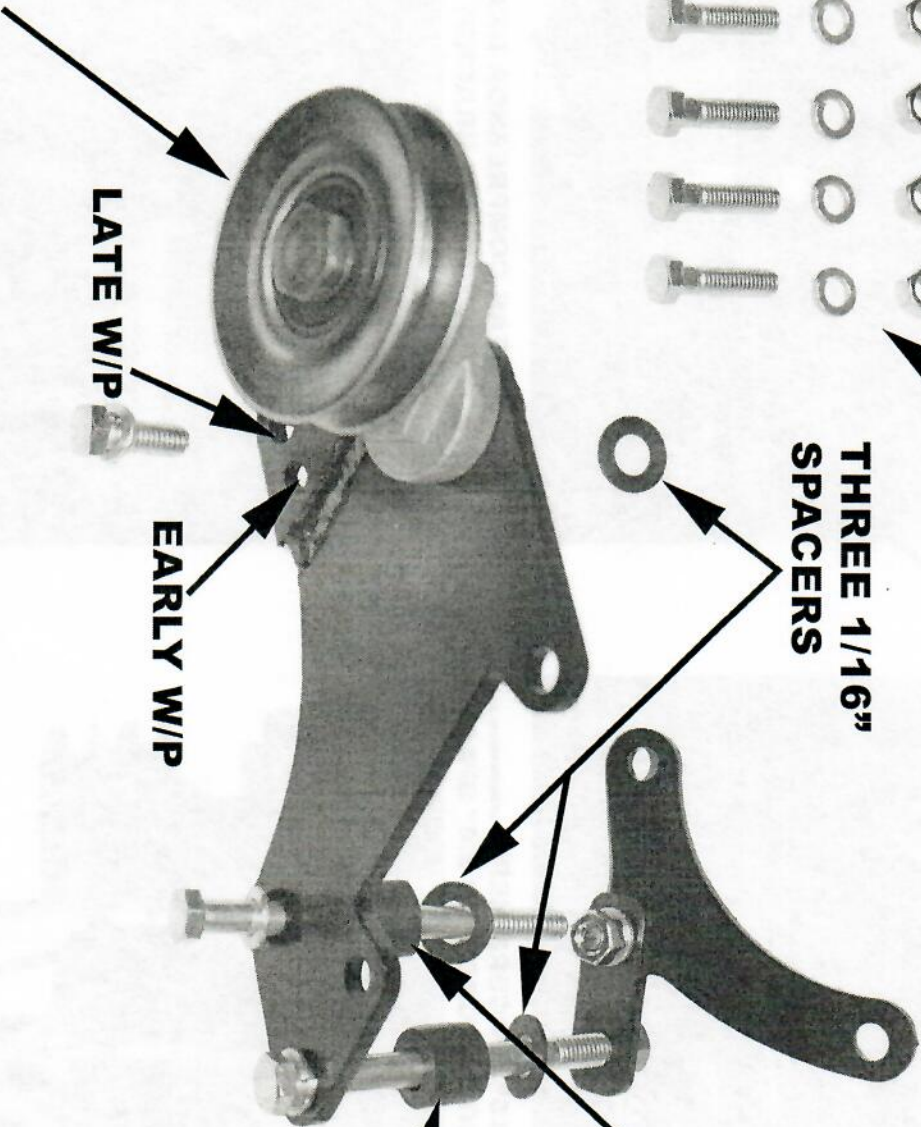
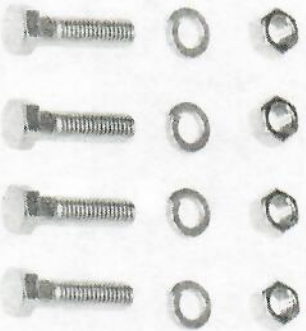
NonAllylic die Parts
"Keeping Your Classics Cool"

BIG BLOCK MOPAR BRACKET SETUP INSTRUCTIONS

(383, 400, 413, 426, 440) WITH OR WITHOUT POWER STEERING

**COMPRESSOR
NUTS BOLTS & WASHERS**

**THREE 1/16"
SPACERS**



LATE W/P
ONE 3/4" SPACER
EARLY W/P
1 1/8" SPACER

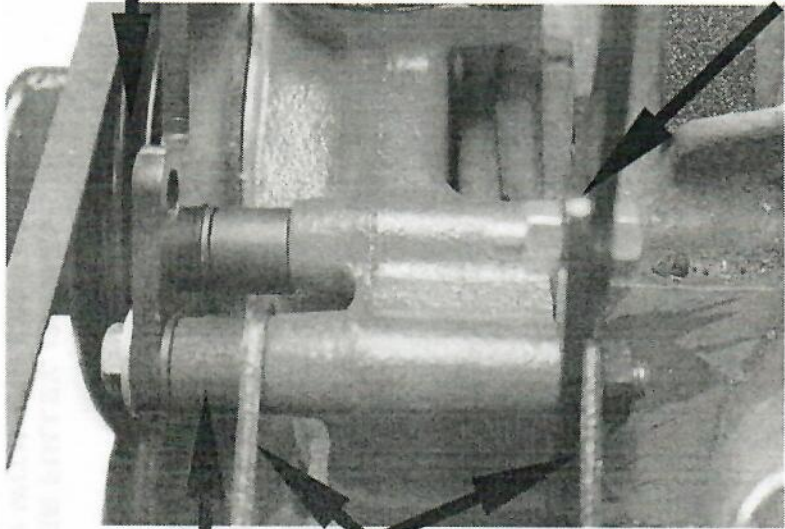
LATE W/P
STANDARD STEERING
ONE 3/4" SPACER
POWER STEERING
ONE 5/8" SPACER
EARLY W/P
STANDARD STEERING
ONE 3/4" SPACER
POWER STEERING
VARIES DUE TO
ACCESSORIES

**IF USING IDLER & ECCENTRIC
3-1/2" DEEP CRANK PULLEY IS REQUIRED
(ADD ON PULLEY (PN:PM12) AND FAN SPACER (PN:3960) AVAILABLE)**



Authenticity of Parts
"Keeping Your Classics Clean"

**NEW REAR BRACKET
PLATE BETWEEN
PUMP HOUSING &
P/S BRACKET**

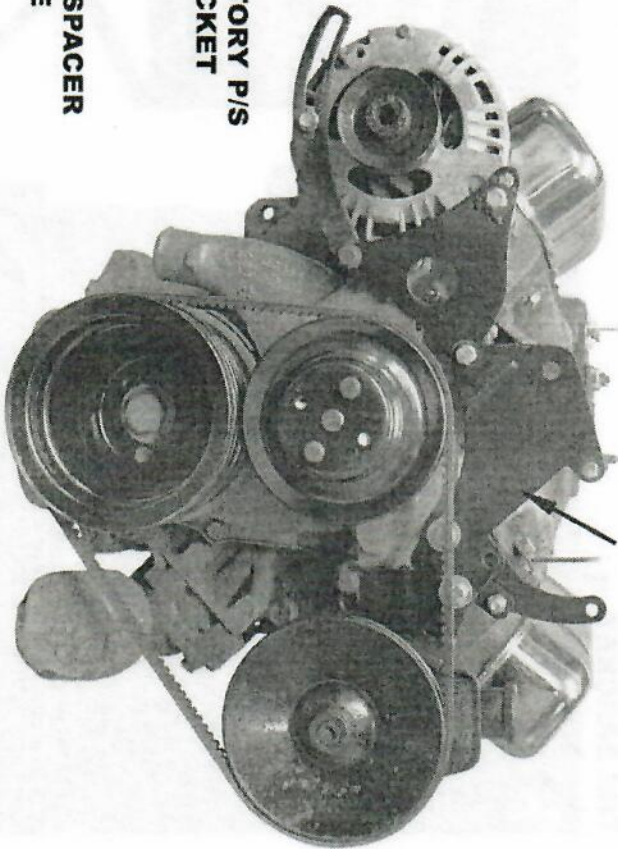


**NEW FRONT
BRACKET**

**FACTORY P/S
BRACKET**

**5/8" SPACER
HERE**

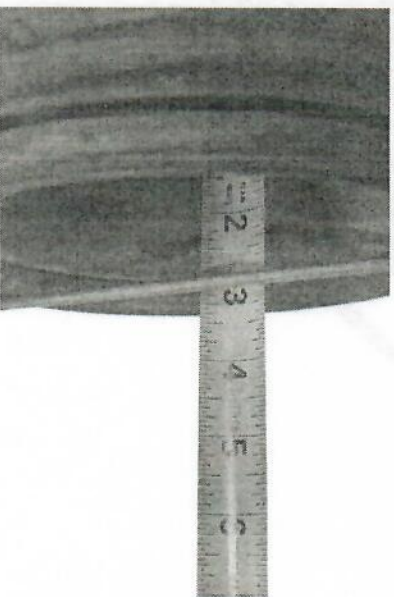
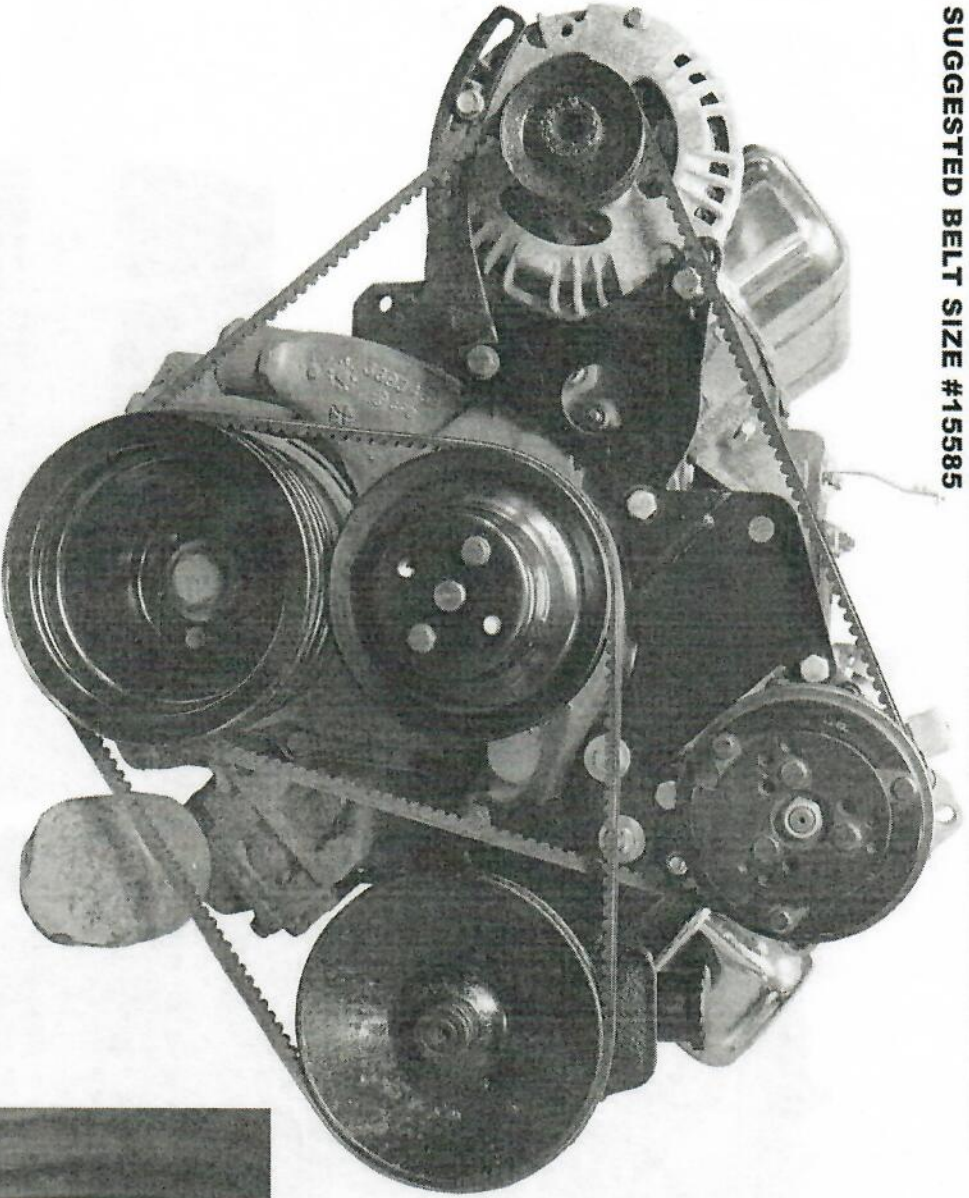
BRACKET SHOULD LOOK LIKE THIS ONCE INSTALLED





Mopar
"Keeping Your Classics Alive"

**BRACKET SETUP WITH POWER STEERING.
THIS SETUP REQUIRES 2 GROOVE CRANK PULLEY AND POWER STEERING
SUGGESTED BELT SIZE #15585**





Maximum Horse Power
"Keeping Your Classic Cool"

**BRACKET SETUP WITH POWER STEERING AND IDLER.
THIS SETUP REQUIRES 3 GROOVE CRANK PULLEY 3-1/2" DEEP OR OUR ADD ON PULLEY PN:PM12
SUGGESTED BELT SIZE #50517**

